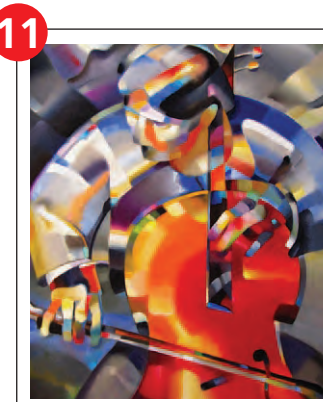


# Innisfil Studio Tour 2016

24<sup>th</sup> Annual



**11 ANDREI KOVALEV**  
The light is the main "hero" of my paintings.  
1976 Emerald Court  
Off Webster and Jans Blvd  
416-483-2504  
akovalev@sympatico.ca  
www.andreikovalev.com

11



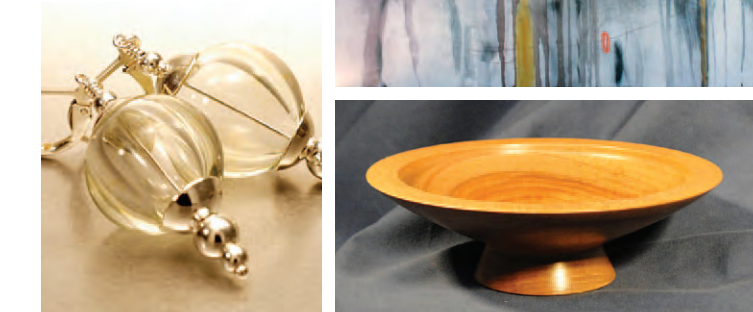
**12 JAMES HARDIE**  
Abstract paintings, portraits, illustrations in acrylic.  
654 Lakelands Ave.  
Alcona  
705-436-5120  
jamie@hardieandcompany.com

12

13



**13 GAIL ESAU**  
Unique figurative sculpture in cement and plaster, also new assemblages.  
Cherry Creek School House  
5850 Yonge St., Churchill  
west side between 2nd & 3rd concessions  
705-456-2285  
gailsau@hotmail.com



Enjoy a self-guided tour through beautiful Innisfil, visiting the wonderful and talented artists of the region.  
**Saturday & Sunday, November 5 & 6, 2016**  
**10 am - 5 pm**  
**FREE ADMISSION!**  
[www.innisfilstudiotour.ca](http://www.innisfilstudiotour.ca)

**Kempenfelt**  
**WINDOWS & DOORS**  
For a FREE Estimate call  
**705-737-1554**

**VISIT OUR ARTISTS AT THE HISTORIC KNOCK SCHOOL**



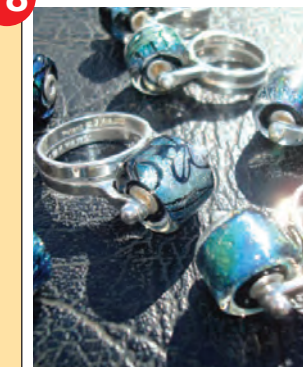
Dating back to 1902, this one-room schoolhouse was in use until 1965. Next, the building became a hub for the Knock community for parties, card playing, quilting bees and more until the 1990s. The Town of Innisfil took ownership and, in 2007, the building was renovated and became known as the Knock School Heritage Site and is fittingly home to the Innisfil Historical Society.

17



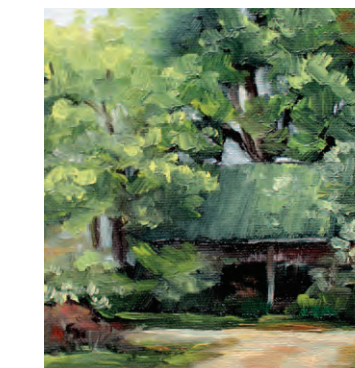
**17 RON HAIST**  
Award winning, internationally acclaimed pyrography artist excelling in detailed Canadian wildlife. Ron will be demonstrating Pyrography (wood burning) techniques.  
416-606-6798  
ronhaist@bell.net  
www.haist.artistwebsites.com

18



**18 DEENI DEMEDEIROS**  
Handmade glass beads and jewellery, custom designs. Dichroic Art Glass - silver settings.  
www.artworx.ca  
deeni@artworx.ca  
705-721-8480

19



**19 LISA RANKIN**  
Original oil paintings - landscapes, portraits of people and pets.  
705-431-7560  
lisaspalette@hotmail.com  
www.lisaspalette.com

14



**BENITTA WILCOX**  
Hand knitted wearable art - scarves, shawls, ponchos, etc.  
519-833-9042  
b.wilcox@sympatico.ca

15



**15 BETH EVANS**  
Nature inspired mixed media paintings in acrylic, encaustic and Japanese paper. Beth will be demonstrating encaustic painting techniques.  
705-888-0134  
beth@bethevans.ca  
www.bethevans.ca

16



**16 ANASTASIA CHEETHAM**  
Turned wooden bowls, pens, bottle stoppers and other items - local and exotic woods.  
416-923-9674  
turner@anastasiacheetham.ca  
www.anastasiacheetham.ca

- |   |   |
|---|---|
| <b>1 JANET READ</b><br>4000 Grove Place               | <b>11 ANDREI KOVALEV</b><br>1976 Emerald Court          |
| <b>2 JANE DEWAR</b><br>4000 Grove Place               | <b>12 JAMES HARDIE</b><br>654 Lakelands Ave.            |
| <b>3 NATASHA LOKSHIN</b><br>538 - 13th line, Innisfil | <b>13 GAIL ESAU</b><br>5850 Yonge St. Churchill         |
| <b>4 PAUL FORDE</b><br>12 Country Ln., Barrie         | <b>KNOCK SCHOOL</b><br>7756-10 Sd Rd.                   |
| <b>5 JOHN BARTOSIK</b><br>585 Mapleview Dr. E.        | <b>14 BENITTA WILCOX</b>                                |
| <b>6 JEANETTE BARTOSIK</b><br>585 Mapleview Dr. E.    | <b>15 BETH EVANS</b>                                    |
| <b>7 PATRICIA JACKSON</b><br>965 Yonge St., Barrie    | <b>16 ANASTASIA CHEETHAM</b>                            |
| <b>8 GERDA SCHULZ</b><br>2536 Lloyd St., Innisfil     | <b>17 RON HAIST</b>                                     |
| <b>9 JEANETTE LUCHESE</b><br>1803 9th Line, Innisfil  | <b>18 DEENI DEMEDEIROS</b>                              |
| <b>10 MARY CELLUCI</b><br>1803 9th Line, Innisfil     | <b>19 LISA RANKIN</b>                                   |
|   | <b>YOUTH ART SHOW</b>                                   |
|   | <b>Y ideaLAB &amp; Library</b><br>967 Innisfil Beach Rd |

• SAFETY BOOTS • BIRKENSTOCKS • MOCCASINS

**HERBERT'S**  
Since 1958

**BOOTS & WESTERN WEAR**

INNISFIL  
HWY 400 @ INNISFIL BEACH RD.  
(705) 431-2500

[www.HERBERTSBOOTS.COM](http://www.HERBERTSBOOTS.COM)

**Expert service always comes standard.**

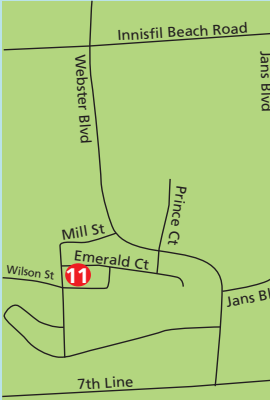
**Odette Elizabeth Novielli, Agent**  
11-8056 Yonge St  
Innisfil, ON L9S 1L6  
Bus: 705-436-3276  
odette.novielli.m80s@statefarm.com  
www.innisfilinsurance.ca  
Monday to Thursday 9 am to 7  
Fridays 10 am to 5 pm  
Saturday by appointment only  
Se habla español

State Farm® prides itself on unmatched customer service, decades of experience and one of the world's largest claims teams. And that's just the basic package.  
**Get to a better State®. Get State Farm. CALL ME TODAY.**

**State Farm®**  
1401018CN State Farm, Canadian Head Office, Aurora, Ontario



**MAP DETAIL**



**The Fork & Plate**  
Family Grill INC.

Debi and Ralph  
2383 25th Side Road  
Innisfil Ontario L9S 2G3  
Tel: 705-431-0442  
Fax: 705-431-6875  
www.theforkandplate.com

**BRUNO'S**  
BAKERY & CAFE

808 INNISFIL BEACH ROAD 705-431-0606  
brunosbakerycafe@gmail.com

# Welcome

## to the 24th Annual Innisfil Studio Tour and 4th Annual Youth Art Show!

The artists and organizers of the Innisfil Studio Tour invite you to join us for an exciting weekend of creativity and inspiration.

Meet the artists, enjoy demonstrations of their talents and don't miss the opportunity to purchase one-of-a-kind art. Explore the growing community of Innisfil and take in the fall sights while you stop for lunch or a break at one of our local eateries!

Thank you to our exclusive media sponsor Metroland Media



[www.iachc.ca](http://www.iachc.ca) [www.innisfilstudiotour.ca](http://www.innisfilstudiotour.ca)



*Relax!*

We will take care of it.

Carefree days are just around the corner.

Call Today for a Complimentary Lunch and Tour!



705.431.8105

Call Today to find out about our Respite & Short Stay Accommodations. Limited Availability.

**1** **JANET READ**  
Colour saturated abstract paintings evoke sky & water through gesture and hue.  
4000 Grove Place  
Innisfil  
Big Bay Point Rd & Yonge St.  
janetread3@gmail.com  
www.janet-read.com

**2** **JANET'S GUEST ARTIST:**  
**JANE DEWAR**  
Mixed media artworks – layered elements from nature, ephemera and much more!  
705-817-3803  
janedewarart@gmail.com

**3** **NATASHA LOKSHIN**  
Art Atelier displaying various styles and medias, including wool art, and offering classes.  
538 - 13th line, Innisfil  
13th line and 25th sideroad  
416-471-3525  
natasha@artatelier.ca  
www.artatelier.ca

**4** **PAUL FORDE**  
Acrylic paintings of landscape memories. Paul shows his work in a number of Ontario galleries.  
12 Country Lane, Barrie  
Mapleview and Country Lane  
705-725-0750  
paul.forde@sympatico.ca  
www.fordesigns.ca

**5** **JOHN BARTOSIK**  
Local and international fine art photography.  
585 Mapleview Dr. E.  
Barrie  
705-722-4292  
john-bartosik.pixels.com

**6** **JOHN'S GUEST ARTIST:**  
**JEANETTE BARTOSIK**  
Solid sterling silver chains and findings, semi-precious beads or fresh water pearls all harmoniously designed and assembled with handmade art glass beads.  
info@jeanetteka.com  
www.jeanetteka.com

**7** **PATRICIA JACKSON**  
Weaving and hand crafted soaps along with products for the bath.  
965 Yonge St.  
Barrie  
705-722-3825  
soapladypatsy@yahoo.ca

**8** **GERDA SCHULZ**  
Painting on vintage windows, picture frames, glasses, ornaments and vases.  
2536 Lloyd St.  
Innisfil  
705-431-8862  
gerda480@gmail.com

**9** **JEANETTE LUCHESE**  
Painting, printmaking and glass art objects.  
1803 - 9th Line  
Innisfil  
west of tracks  
705-436-7607  
www.jeanetteluchese.com

**10** **JEANETTE'S GUEST ARTIST:**  
**MARY CELLUCCI**  
Drawings, paintings and prints.  
705-456-2810  
mary2810@rogers.com

**PET COUNTRY ESTATE**  
EDINGLAS KENNELS REG'D  
GOLDEN RETRIEVERS  
Owner: **Liz Gordon**  
Head Trainer: **Jim Gilchrist**  
- Boarding Kennels  
- Doggie Daycare  
- C.K.C. Breeders  
- Obedience Training  
- Agility Training  
- Cat Boarding  
P.O. Box 7098 Innisfil, Ontario, L9S 1A8  
www.petcountryestate.com info@petcountryestate.com  
T- 705-431-1010  
F- 705-431-7632

**Sobeys**  
INNISFIL BEACH ROAD & JANS BOULEVARD  
Kevin Augustyn, FRANCHISEE 705-431-6667

**ALCONA**  
**Esso**  
**Rod's** COFFEE & DONUTS  
**\$9.00 OFF any Oil Change Package**  
Not to be combined with any other offer.  
1080 Innisfil Beach Rd. 705 436 9780 www.alconaesso.com

**I know Innisfil!**  
**CINDY POLLARD**  
(Sales Representative)  
**HomeInSimcoe.com**  
Call TODAY! 705-791-2121 Direct  
**RE/MAX** REMAX Chay Realty Inc., Brokerage

**Kell's Garden City**  
o/o Garden City Inc.  
1451 10<sup>th</sup> Line, Innisfil, ON L9S 3N5  
**705-436-4557**  
Stop by or call TODAY for help with ALL your landscaping needs!

**DONNA ORSATTI**  
Councillor Ward 3  
Cell: 705-717-3217  
dorsatti@innisfil.ca

**Meridian™**  
Meridian is Ontario's largest credit union, helping more than a quarter of a million Members grow their lives and businesses.  
As a credit union, we are 100 percent owned by our Members. We work only for them, with profits returned to our Members in the form of the best products and services we can offer.  
We get to know our Members so that we can proactively advise them on ways to save money, how to invest for the future and what financial solutions are in their best interest.  
**Meridian™**  
Your money. Your way. Imagine that.™  
Jason Locke | Branch Manager  
Big Bay Point Branch  
592 Yonge Street  
Barrie, Ontario, L4N 4E4  
Phone: (705) 722-6919 ext 5510  
Cell: (705) 220-3486 Fax: (705) 722-6230  
Jason.Locke@meridiancu.ca  
meridiancu.ca

# INNISFIL Youth ART SHOW

Entering its 4th year, the Youth Art Show celebrates the talents of young people from Innisfil ages 12-20.

We have invited students from elementary and secondary schools in the area to participate - some as artists who will submit their works to a panel of local artists for adjudication, others to help plan and promote the event.

Once the jury has selected the artworks, certificates of recognition will be awarded. Our hope is to give the next generation of artists an opportunity to display and maybe even sell some of their masterpieces in our studio tour.

Their work will be on display at the **ideaLAB & Library, Lakeshore Branch.**



**ALCONA ANIMAL HOSPITAL**  
Paul Neilan, DVM Anne Paquette, DVM  
**705.431.5570**  
1070 Innisfil Beach Road, Innisfil, ON L9S 4T9  
NEW PATIENTS WELCOME!